

# Introduction - About Us

The vision for the Coastal Simulation Program is to lead an accredited regional simulation program with staffing expertise and a wide range of innovative equipment. We also strive to support patient care improvements across all professional groups as well as within patient care teams. Application of simulation can lead to potential impacts such as:

**Improving Communication and Care Processes within Care Teams.** We present opportunities for interdisciplinary care teams to practice unusual and difficult scenarios, so that they are better prepared for these events, can gain clarity on roles, and can practice specific skills to improve patient care processes and outcomes (i.e. mock code blues, anaphylactic reactions etc..)

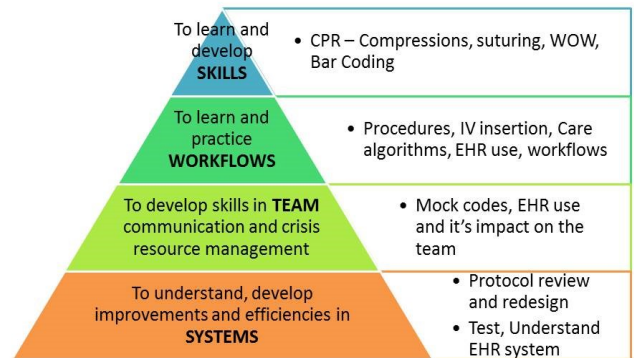
**Improving clinical skills within professional and student groups.** We present opportunities for professionals and students to practice and improve upon skills before trying them on real patients.

**Support of Rural and Remote Care.** We present opportunities for teams to run simulations, to debrief specific adverse events and to identify areas for improvement in future events (i.e. risk management and mitigation).

**Research in New Care and Technology.** We can use the simulation environment to test new equipment or care processes prior to introducing them into the clinical environment.



## Impact of Simulation



## Introduction

About Us .....	3
Our Staff .....	4

## Our Space

The Academic Hub .....	8
The Kevin and Patricia Huscroft Coastal Simulation Centre ....	9

## Our Equipment

Human Patient Simulators .....	10
Task Trainers .....	11

## Simulation Learning Strategies

What is it? .....	12
Testimonials .....	13

## Booking a Session

Contact Information .....	14
---------------------------	----



## Introduction - Our Staff

**Karen Schafer - Director: Coastal Simulation Program** Karen leads the Vancouver Coastal Health simulation program team in developing simulation strategy, resources and services. Her efforts go towards expanding the use of quality simulation based education throughout the health authority. Karen has extensive experience in developing simulation programs; prior to her role at VCH, she was instrumental in the development of the British Columbia Children's and Women's Hospital simulation program. She has a nursing background with 18 years experience in leadership/educator roles. She is a strong advocate for collaboration and open sharing of simulation resources province-wide; Karen strives to potentiate the development of evidence based healthcare simulation. Karen also leads a development project in Haiti through Rose Charities which seeks to develop educators to provide neonatal resuscitation training at their hospitals. When not dreaming about simulation, Karen can usually be found taking care of her family or out in the forest re-energizing with her dog Kali.



**Shannon Chestnut - Medical Director: Coastal Simulation Program** Shannon is an emergency physician who has been involved in education and simulation training throughout her career. She is a big believer in interdisciplinary simulations and the importance of involving all members of the team. She got her start in simulation as an Advanced Pediatric Life Support instructor at the British Columbia Children's Hospital. The Coastal Simulation Program has taken her from weekly on-site simulations in the emergency room at Lion's Gate Hospital up to Bella Bella for rural outreach education. Shannon is also running the Coastal Family Residency simulation curriculum and is developing an on-mountain simulation program for the Whistler/Blackcomb Ski Patrol. In her down time, Shannon loves to play in the mountains with her family. She can be found skiing, biking, or simply getting lost outside.



## Introduction - Our Staff

### **Richard Pinto - Simulation Operations Specialist**

Richard oversees and coordinates the day-to-day activities of the Coastal Simulation Program. In partnership with educators, he ensures scenarios are run in accordance with learning objectives. He is also instrumental in enhancing a scenario's level of fidelity and realism. Prior to his career in simulation, Richard worked in audio-visual where he serviced both the hotel and entertainment industries. He began his first stint in healthcare as a simulation technologist at the British Columbia Children's and Women's Hospital. Richard studied at the University of Victoria where he received his BA in English Literature and Music. He still works part-time as a singer and musician around the Greater Vancouver area. Richard's all-time favourite television show is Mad Men. His two dogs, Bowser and Riley, enjoy ruining anything he leaves out on the kitchen counter.



### **Michelle Connell - Regional Clinical Educator**

Michelle has been part of the Vancouver Coastal Health team since 2000. She started her nursing career in Neurosciences at Lions Gate Hospital and transferred to Emergency Nursing in 2003. Michelle has enjoyed a diverse career in Emergency with opportunities to work in education, project management, and in-situ simulation. Her most recent Trauma Coordinator role at Coastal health was an exciting part of her nursing career, providing her with the opportunity to specialize in the care of the trauma patient under the umbrella of Trauma Services BC. The Coastal Simulation Program has supported Michelle through in-situ emergency simulations to facilitating the Mock Code Blue Program to co-facilitating simulation events across the Coastal Rural sites. When not at work, Michelle spends time with her beautiful (big) family, climbing mountains either on her downhill mountain bike, hiking, or snowshoeing. Michelle can be found spending her Friday nights with her husband playing co-ed ice hockey.



## Introduction - Our Staff

### **Anna Lee - Regional Clinical Educator: Simulation**

Anna has worked at Vancouver Coastal Health since 2008. She started her career in acute medicine and eventually transitioned to working critical care. She worked in the Intensive Care Unit at Vancouver General Hospital since 2011, where she had the opportunity to work in a variety of roles, including being part of the Code Blue response team and the Outreach team. She also enjoyed her work as a critical care instructor for British Columbia Institute of Technology. Anna completed her Master of Science in Nursing degree at University of British Columbia in 2019 with a focus on education and nursing professional development. When not at work, Anna spends her time hiking with her dog, lounging around with her two cats, or travelling the globe with her husband.



### **Glenn James - Clinical Simulation Technician**

Glenn has worked in healthcare simulation for five years, working as both a simulation technician and lab supervisor at Douglas College's Faculty of Health Sciences. He continues to work as a contract standardized patient in both teaching and examination settings. In addition to his work in healthcare education, Glenn is a songwriter, composer, and pianist. When he's not writing songs, performing, or recording, he is usually building things out of wood. Glenn and his wife are the owners of two very adorable beagles that will eat your lunch if you leave it unattended for any length of time.



# Our Space - The Academic Hub

Room	Capacity	Equipment	Configuration	V-Con
<b>Main Classroom 2112/2113</b>	40 people	1 Large wall mounted monitor	Classroom seating, can be divided into 2 smaller rooms	Yes
<b>Medium Meeting Room 2121/2122</b>	12 people	1 Large wall mounted monitor, telephone, polycom phone system	Can be divided into 2 smaller rooms with limited sound buffering	No
<b>Small Meeting Room 2131</b>	7 people	Telephone, polycom phone system	Boardroom style	No
<b>Clinical Skills Room 2124</b>	8	Telephone, ceiling mounted patient lift, patient bed, headwall, wall mounted monitor, sink	Patient styled room	No
<b>Simulation Room 2123</b>	8	Telephone, 2 beds with headwalls, wall mounted monitor, sink, and control room	Patient styled room/ observation room	No



## Our Space - The Kevin and Patricia Huscroft Coastal Simulation Centre

Kevin, an electrical engineer and a founder of PMC-Sierra Inc., experienced the benefits of simulation when undertaking extremely complicated development tasks that had to be done correctly the first time to avoid significant delays and costs. Patricia, an educator, has a keen interest in promoting life-long learning. Therefore, their philanthropic initiatives have focused on promoting education to achieve excellence.

With these goals in mind, the concept of the simulation centre was conceived. With the cooperation of the Lion's Gate Foundation and the leadership of Lion's Gate Hospital Staff, primarily Judy Savage, Dr. Ross Brown and Dr. Hazel Park, the concept took shape. The simulation centre became a reality and has achieved acceptance and success largely due to the ongoing support and diligent efforts of the dedicated and enthusiastic staff at Lion's Gate Hospital.

"We are extremely proud to have played a role in seeing the simulation centre being launched and becoming an overwhelming success."

- Kevin and Patricia Huscroft



# Our Equipment - Human Patient Simulators

SimMan 3G

SimBaby

SimJunior

MegaCode Kelly

MegaCode Kid



# Our Equipment - Task Trainers

Little Anne

Mama Natalie

Neonate Intubation Trainer

Nita Newborn

ALS Baby

Resusci Anne QCPR with Airway Head

SimPad with Skill Reporter

Infant Airway Management Trainer

Life/Form Complete Adult Crisis Manikin

Life/Form Manikin Torso w/ Airway Management

Life/Form Micro-Premie Simulator

Obstetrical Manikin - Light

Life/Form Male Catheter Model

Life/Form Female Catheter Model

Kyle 3 Year Old Manikin

Simulaids Kim Infant CPR Manikin

Laerdal HeartSim 2000

Blue Phantom Central Line Trainer

Red Cross AED Trainer

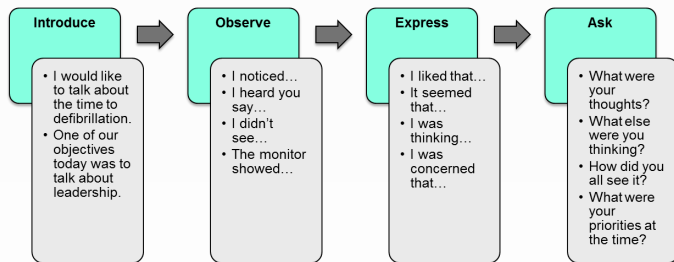
Laerdal AED Trainer 2



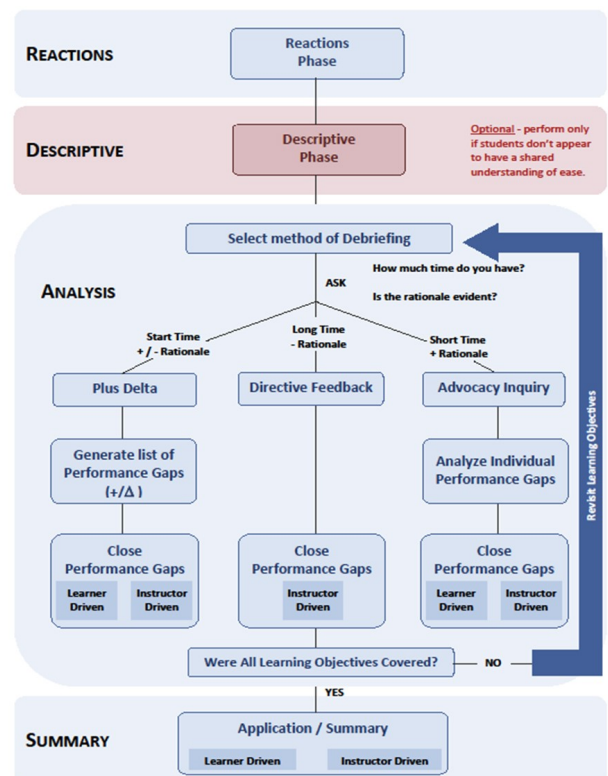
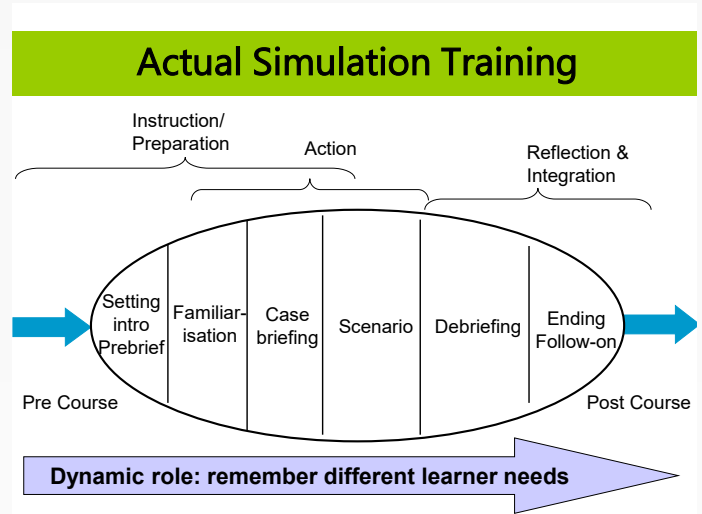
# Simulation Learning Strategies - What is it?

Simulation Learning Strategies is a foundation course developed as a starting place for clinical educators new to simulation. This course aims to provide an experience that will allow learners to:

- Develop a foundational knowledge of simulation based learning strategies
- Identify elements of effective teamwork and incorporate those elements into simulation based learning objectives
- Learn the foundations of debriefing skills and their application in simulation based learning
- Plan and develop a simulation scenario
- Facilitate a simulation scenario
- Gain a mixture of theory and practice with an emphasis on debriefing/feedback relevant for learning



Adapted from Abbey, D. CICSL



## The Responsibility of the Facilitator

- Listen
- Guide
- Support
- Challenge
- Reinforce

Eppich, W., & Cheng, A. (2015). Promoting Excellence and Reflective Learning in Simulation (PEARLS): Development and Rationale for a Blended Approach to Health Care Simulation Debriefing. *Simulation in Healthcare, 10*(2), 106-115. doi: 10.1097/SIH.0000000000000072

## Simulation Learning Strategies - Testimonials

“One of the most useful courses I have ever taken. The presenters were excellent and extremely knowledgeable.”

“A well done course! I would highly recommend it to others! A must take course for all educators!”



“I found this course so valuable on so many levels. I am on the quieter side and it was great to be involved and to feel safe trying out new techniques.”

“It’s really refreshing when the instructors have such a broad knowledge of what they are teaching. I sometimes feel like when I teach, it’s ‘the blind leading the blind’ and the impact just isn’t there.”



# Booking a Session - Contact Information

A yearly booking process supports the booking of space from July to June. This booking process begins April 1, for the subsequent July 1 - June 30 dates. Once this booking process is complete, bookings can be made on a first come first serve basis. As the space is designed to support clinical education as a priority, clinical educators have the right to bump any other bookings with 3 months notice. All attempts will be made to serve all parties.

All simulation-based booking requests or inquiries can be forwarded to: **Richard Pinto** at [Richard.pinto@vch.ca](mailto:Richard.pinto@vch.ca)

